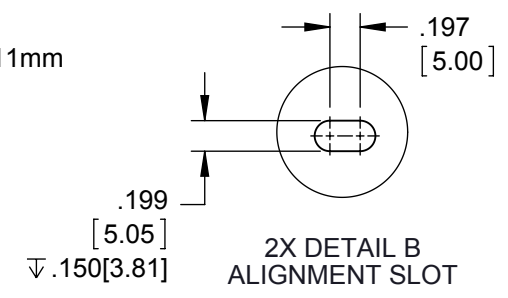
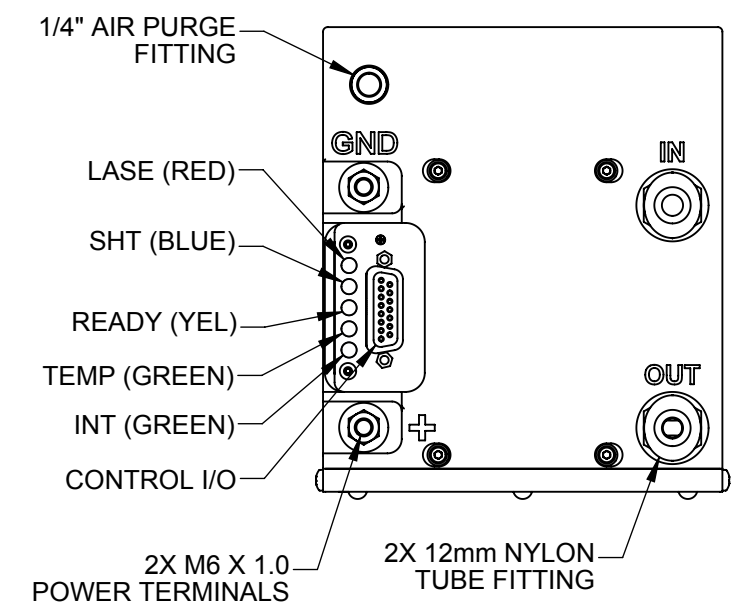
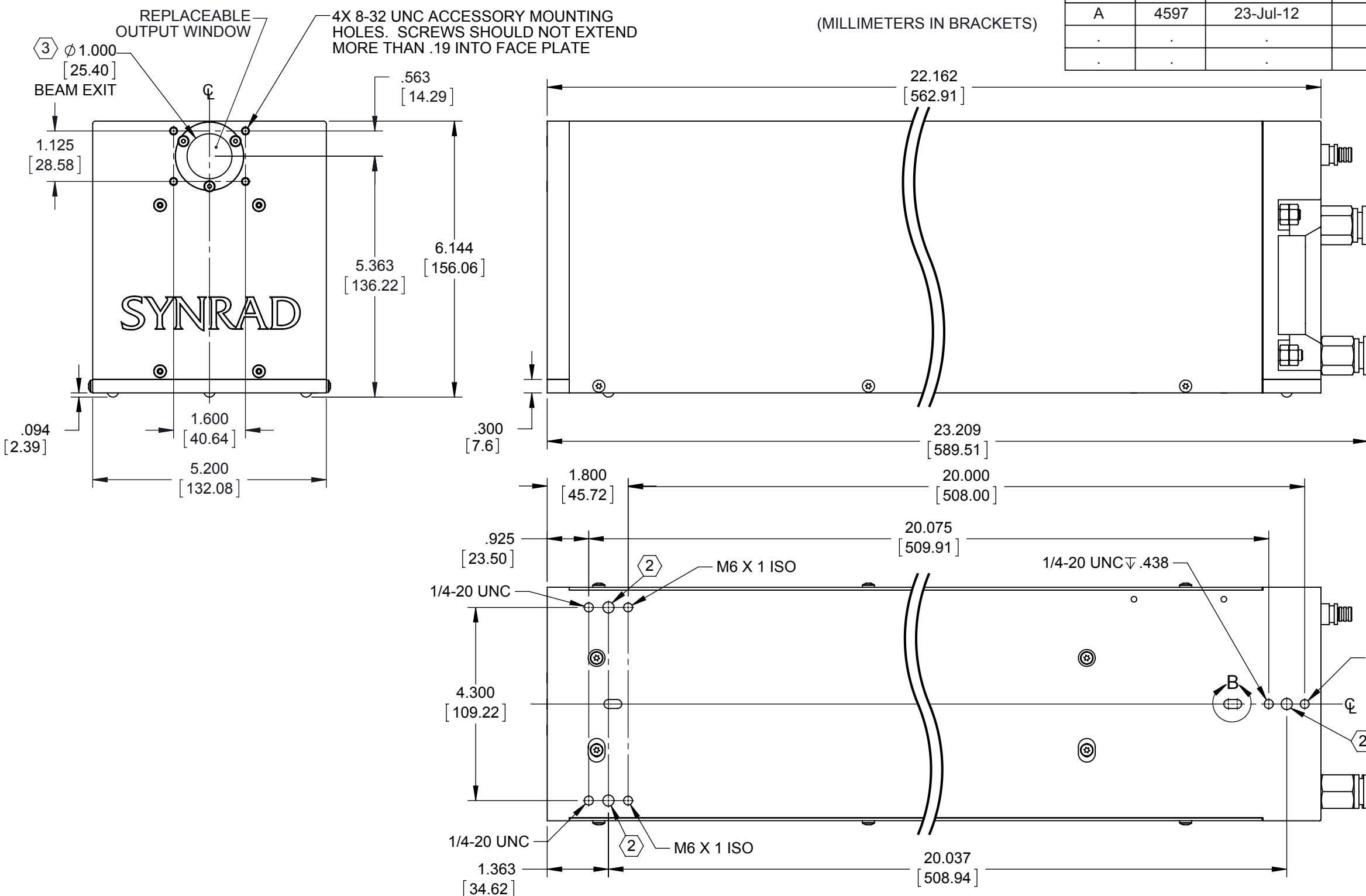


REV	ECO	DATE	DESCRIPTION	DB
A	4597	23-Jul-12	RELEASE TO PRODUCTION	DMD
.
.



- NOTES:
- FOR FULL DETAIL, SEE THE USER GUIDE/MANUAL SUPPLIED WITH THE UNIT.
 - HARDENED BALL MOUNTING POINT, 3X (Ø .250 BALL BEARING).
 - BEAM PATH MAY NOT BE CENTERED OR PERPENDICULAR TO FACE PLATE APERTURE.

TOLERANCES UNLESS NOTED:

.x = ± .1	ANGLE = ± .5°
.xx = ± .01	
.xxx = ± .005	

MATERIAL:

FINISH:

PROPRIETARY
THIS DRAWING IS PROPRIETARY TO
SYNRAD INC. AND SHALL NOT BE
USED OR DISCLOSED IN WHOLE
OR IN PART WITHOUT WRITTEN
PERMISSION OF SYNRAD INC.



SYNRAD INC.
4600 Campus Place
Mukilteo, WA 98275
Phone: (425)349-3500
Fax: (425)349-3667

DESCRIPTION: OUTLINE & MOUNTING, P100			
PART NUMBER:	300-20365-01	DWG/FILE NUMBER:	300-20365-01
SHEET 1 of 2	ENG: RS	DRAWN BY: D. DUVAL	DATE: 12-Jul-11
UNITS: Inches	CATEGORY: .	CHECKED BY:	DATE:
SIZE: B	FINISH CLASS: .	APPROVED BY:	DATE: