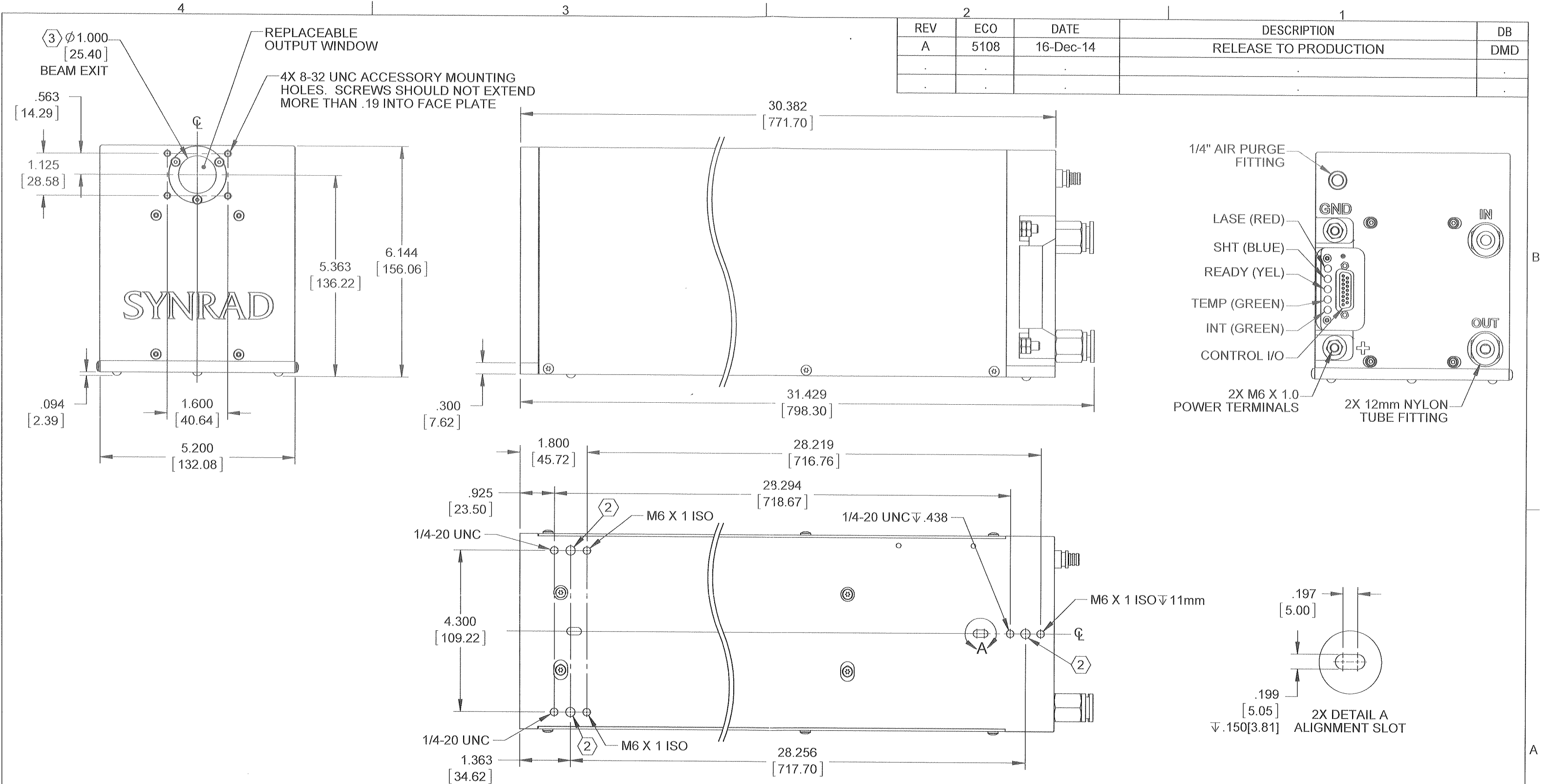
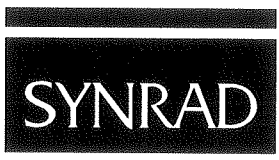
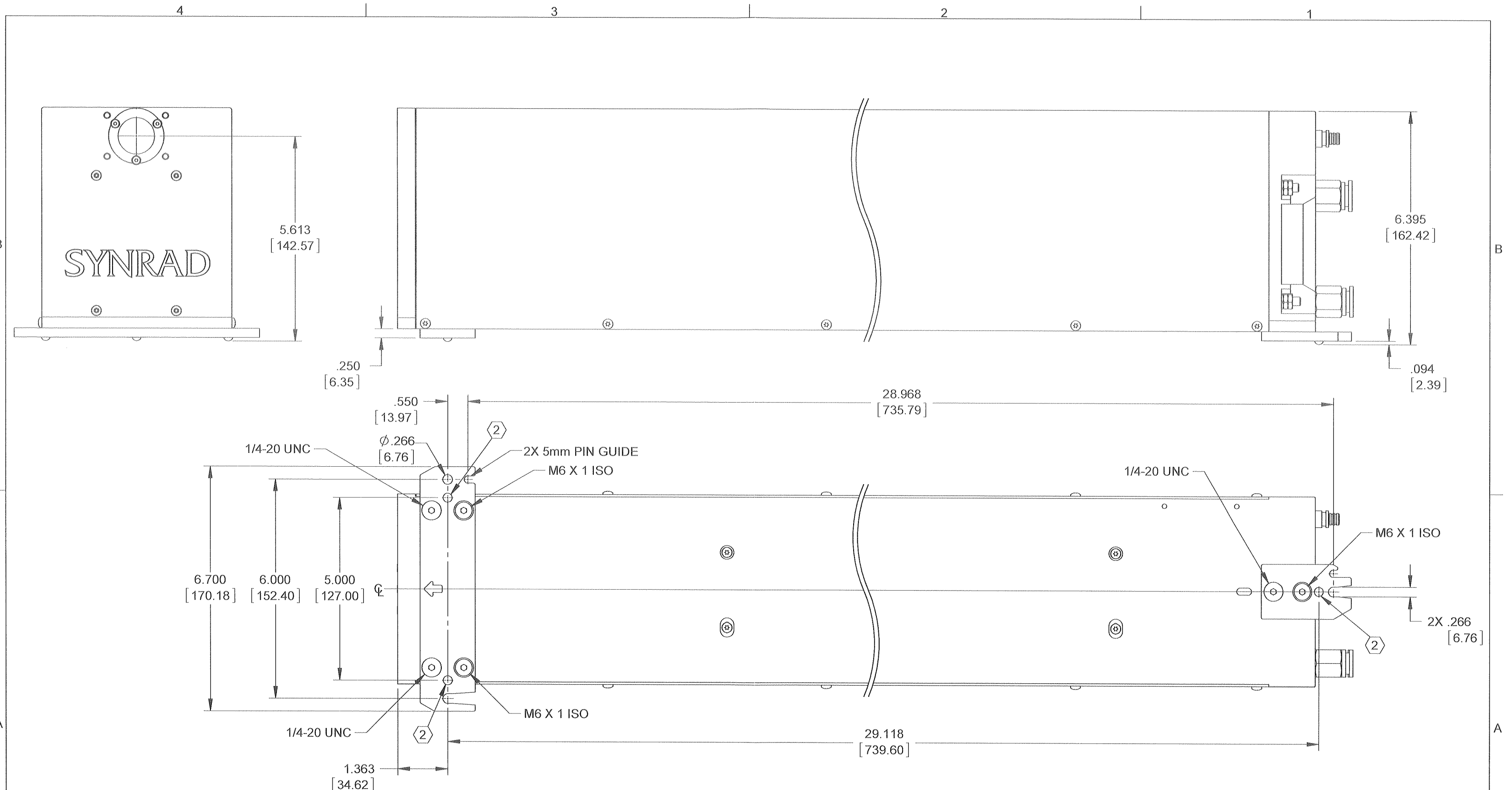


REV	ECO	DATE	DESCRIPTION	DB
A	5108	16-Dec-14	RELEASE TO PRODUCTION	DMD



- NOTES:
- FOR FULL DETAIL, SEE THE USER GUIDE/MANUAL SUPPLIED WITH THE UNIT.
 - HARDENED BALL MOUNTING POINT, 3X (Ø.250 BALL BEARING).
 - BEAM PATH MAY NOT BE CENTERED OR PERPENDICULAR TO FACE PLATE APERTURE.

TOLERANCES UNLESS NOTED:		PROPRIETARY THIS DRAWING IS PROPRIETARY TO SYNRAD INC. AND SHALL NOT BE USED OR DISCLOSED IN WHOLE OR IN PART WITHOUT WRITTEN PERMISSION OF SYNRAD INC.	 SYNRAD INC. 4600 Campus Place Mukilteo, WA 98275 Phone: (425)349-3500 Fax: (425)349-3667	
.x = ± .1	ANGLE = ± .5°			
.xx = ± .01				
.xxx = ± .005				
MATERIAL:		DESCRIPTION: OUTLINE & MOUNTING, P150		
FINISH:		DRAWN BY: D. DUVAL	DATE: 16-Dec-14	DWG/FILE NUMBER: 300-20467-01
		QLTY CHK BY: <i>KV</i>	DATE: 12-29-14	PART NUMBER: 300-20467-01
		ENG CHK BY: <i>GN</i>	DATE: 1/5/15	ENG: RS
		APPROVED BY: <i>PP</i>	DATE: 1/6/15	SIZE: B
		UNITS: Inches	SHEET 1 of 2	CATEGORY: .
				REV. A
				FINISH CLASS: .



WITH OPTIONAL MOUNTING FEET ATTACHED

PROPRIETARY THIS DRAWING IS PROPRIETARY TO SYNRAD INC. AND SHALL NOT BE USED OR DISCLOSED IN WHOLE OR IN PART WITHOUT WRITTEN PERMISSION OF SYNRAD INC.	DESCRIPTION: OUTLINE & MOUNTING, P150			
	PART NUMBER: 300-20467-01	REV. A	DWG/FILE NUMBER: 300-20467-01	SIZE: B SHEET 2 of 2

